

Dinosaur Hall 101



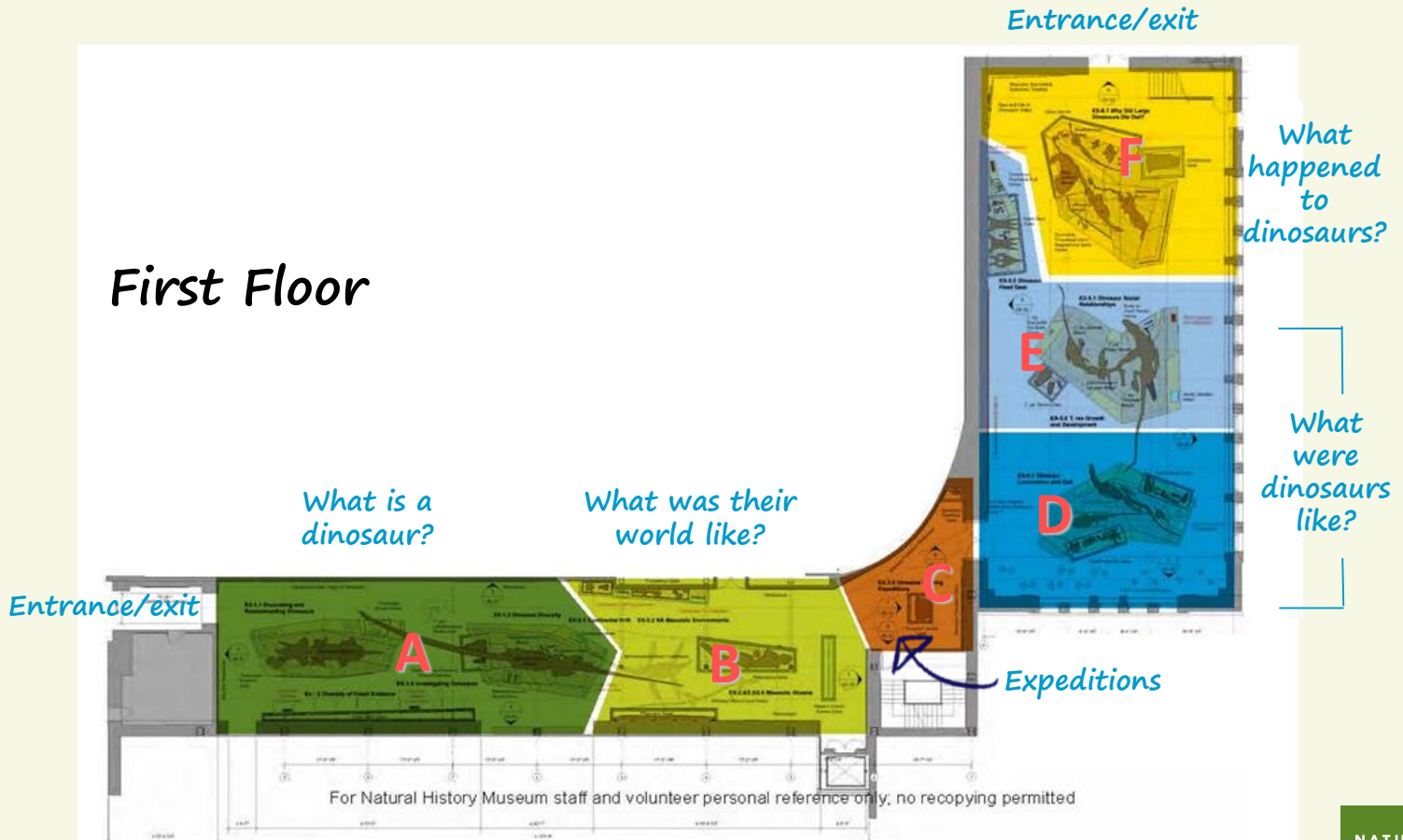
Dinosaur Hall Exhibit Overarching Stories

In the exhibit, *Dinosaurs: Explore Their Mysteries...*

- Experience the ways our scientists have assembled answers to many fascinating questions about their lives and their worlds.
- By piecing together clues in the fossil record, we discover more about the fascinating world of dinosaurs.
- How do Museum paleontologists know what they know ...and what they don't!

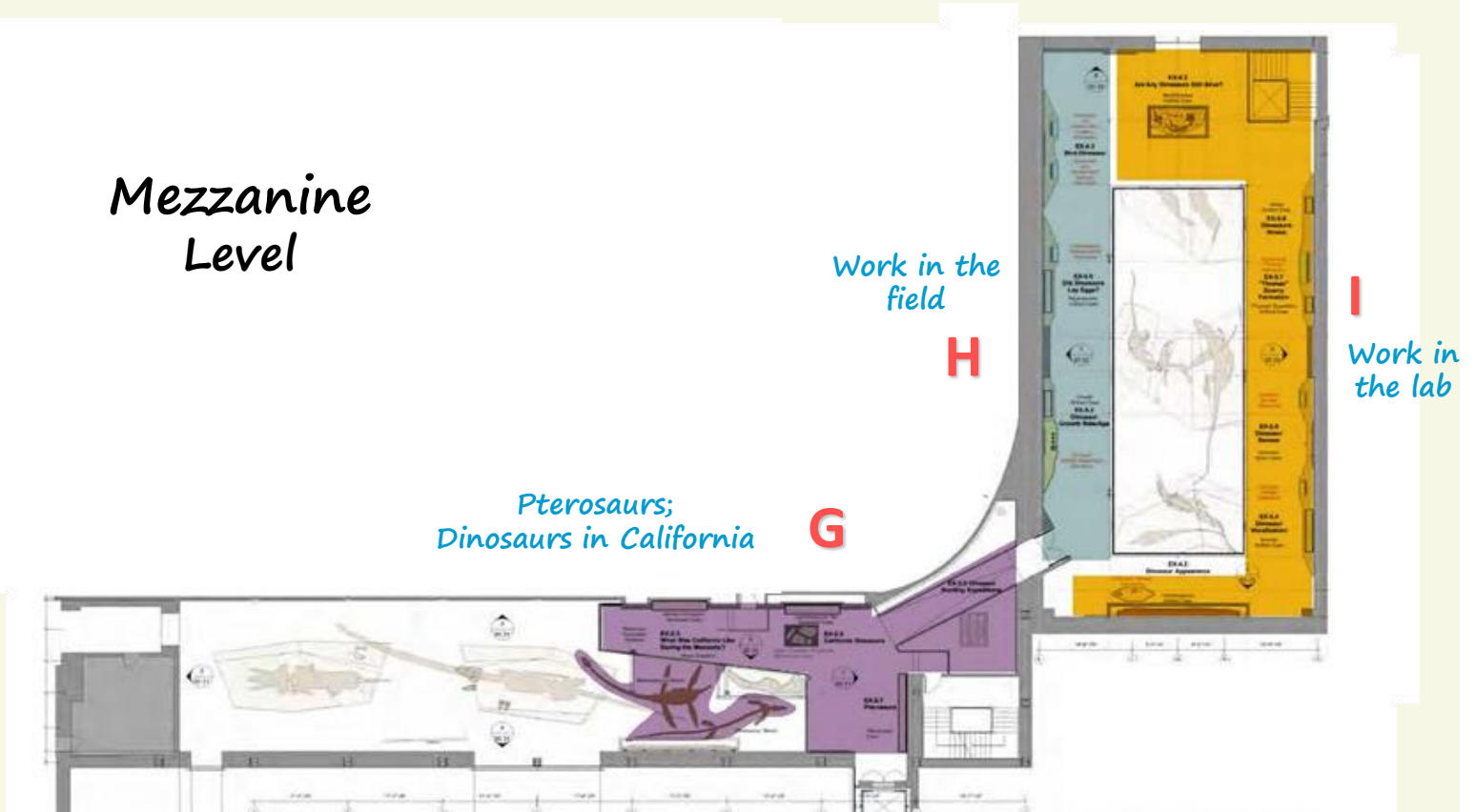
The Dinosaur Hall exhibit is broken up into sections with overarching questions.

Dinosaur Hall Floor Layout, Level 1



Dinosaur Hall Floor Layout, Level 2

Mezzanine
Level



What is a dinosaur?



What are dinosaurs?

- Origins from the Greek words *deinos*: “fearfully-great or terrible” and *sauros* lizard; name given by famous paleontologist Richard Owen in 1842

Characteristics of a Dinosaur

Skull Shape:

Dinosaurs have a fossa (depression) associated with the opening on the top of their skull, that may have anchored jaw muscles.

Open Hip-socket:

Dinosaur hips had an opening in the side for the leg bone to sit in, allowing their legs to sit right underneath them- like ours!



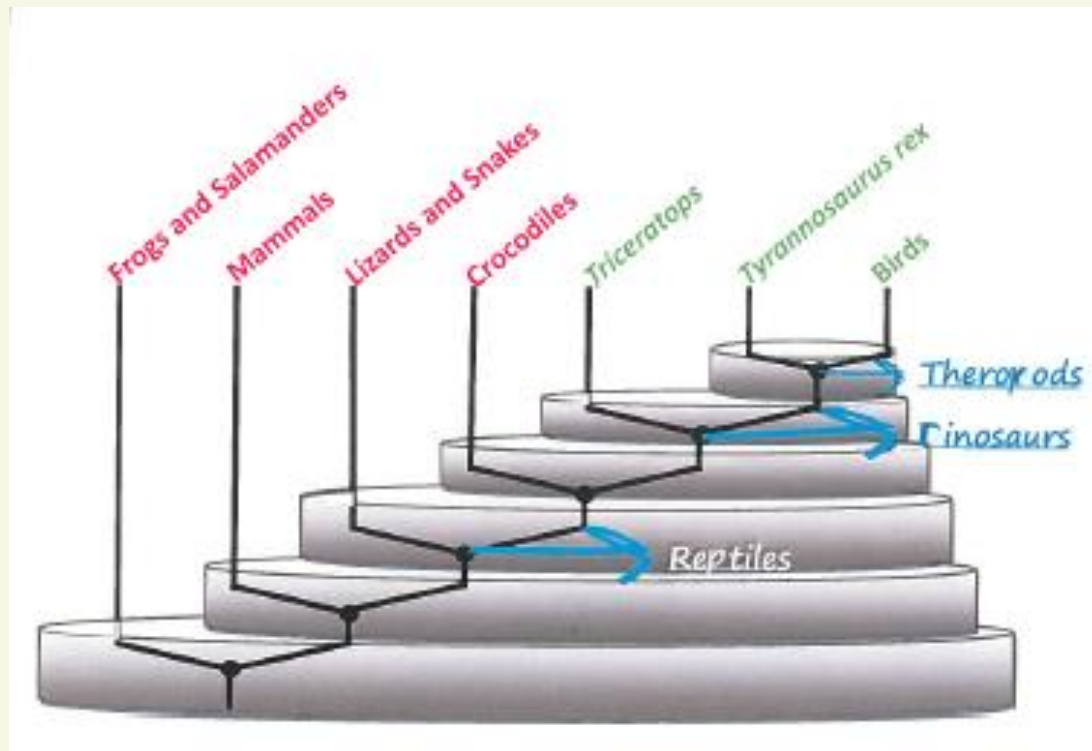
Femur Flange:

Dinosaurs a sharp flange on the back of their femur (upper leg bone), where muscles extending from the base of their tails attached.

Shinbone Crest:

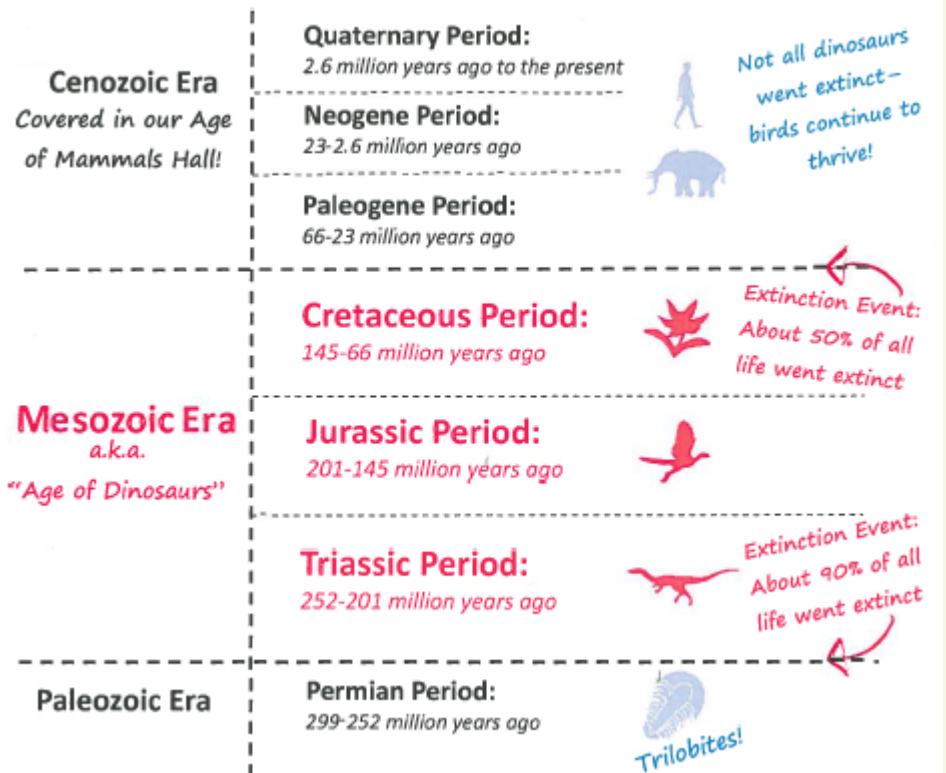
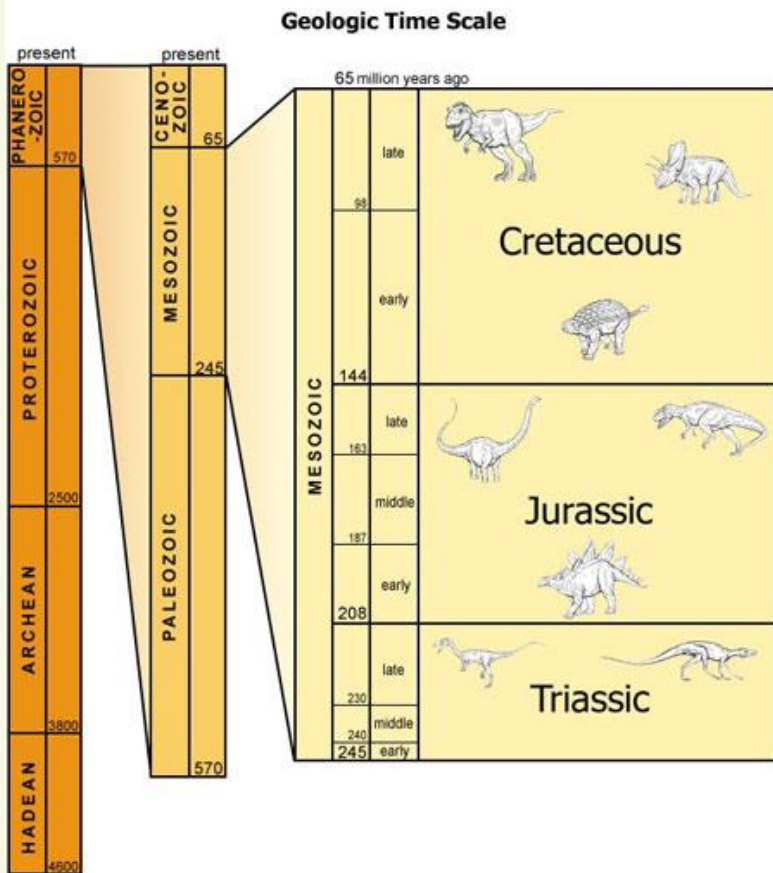
Dinosaurs have a distinct curve to the top of their tibia (shinbone).

Classifying Dinosaurs: Cladogram



When dinosaurs ruled on land*...

Dinosaurs lived during the Mesozoic Era, a.k.a. 'Age of Dinosaurs,' which is divided into three periods



*Not only did dinosaurs live on land, there is evidence of dinosaurs thriving in bodies of water...

A commonly asked question:

“Are those real fossils?”

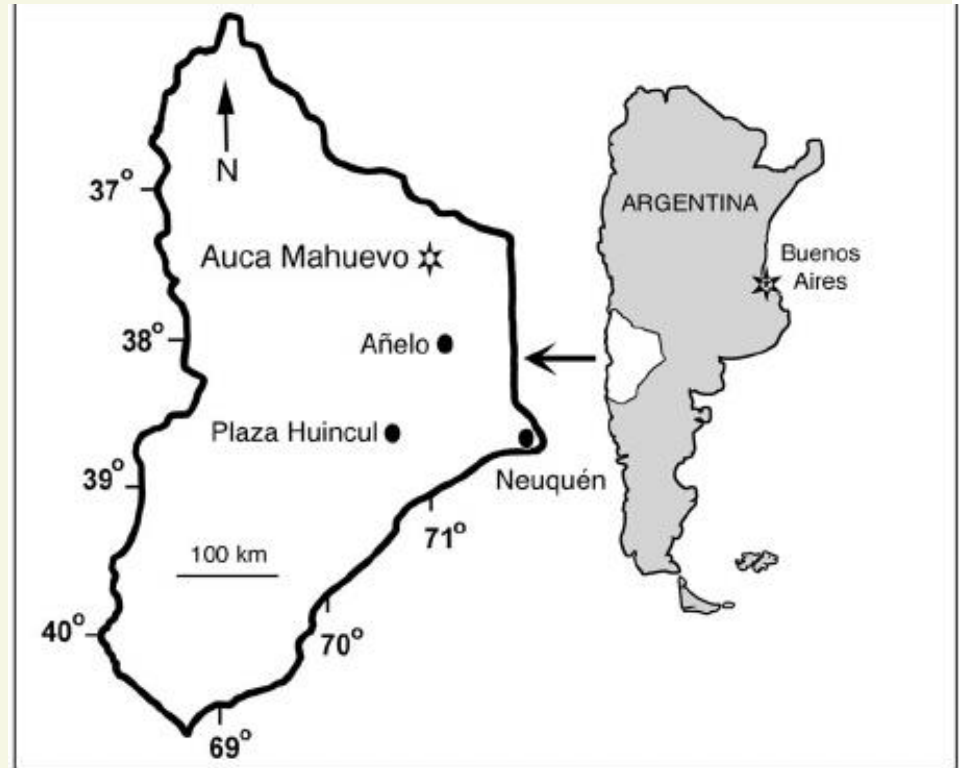
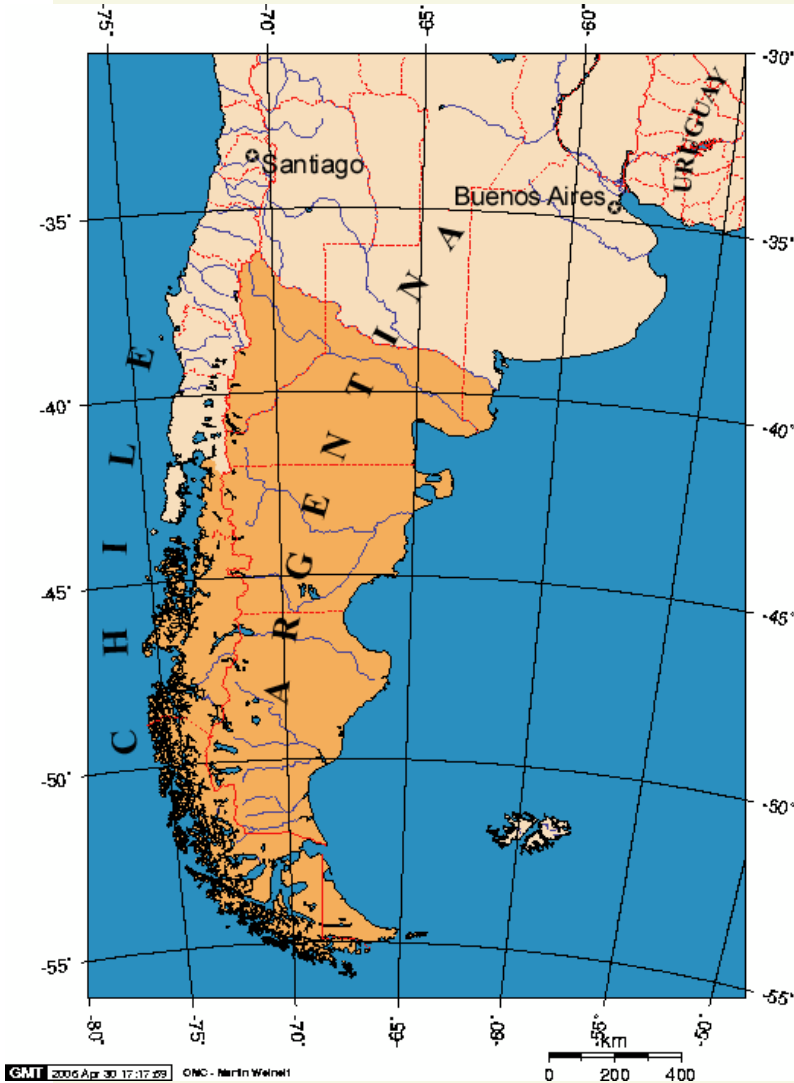
- Most skeletons on display have a mix of real fossils and casts, or reproductions. Most often the reproductions are based off a real fossil.
- Labels will help you determine! Look for the specimen name, if there's (cast) next to the name, it's a reproduction or replica. If there's no indication, it's the real fossil.

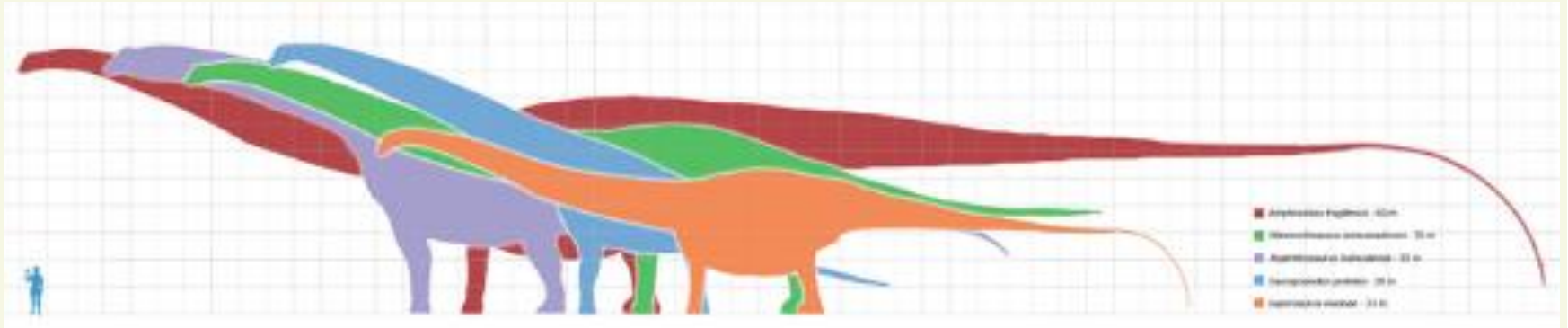
Special Section in Dinosaur Hall

A New Discovery: Walking on Eggs

- In 1997, big scientific discovery made by our VP of Research and Collections and the Director of the Dinosaur Institute, Dr. Luis Chiappe, and his team in Patagonia.
- Found a large area with thousands of dinosaur eggs. This ended up being a nesting site for a type of a long-necked dinosaur (titanosaur). At this site, they discovered embryonic dinosaur skin for the first time!

Location of Discovery





Red: Amphicoelias

Purple: Argentinosaurus

Green: Mamenchisaurus*

Blue: Sauroposeidon

Orange: Supersaurus

Questions/Comments?

There are still a lot that paleontologists don't know! There may be more questions than answers.

