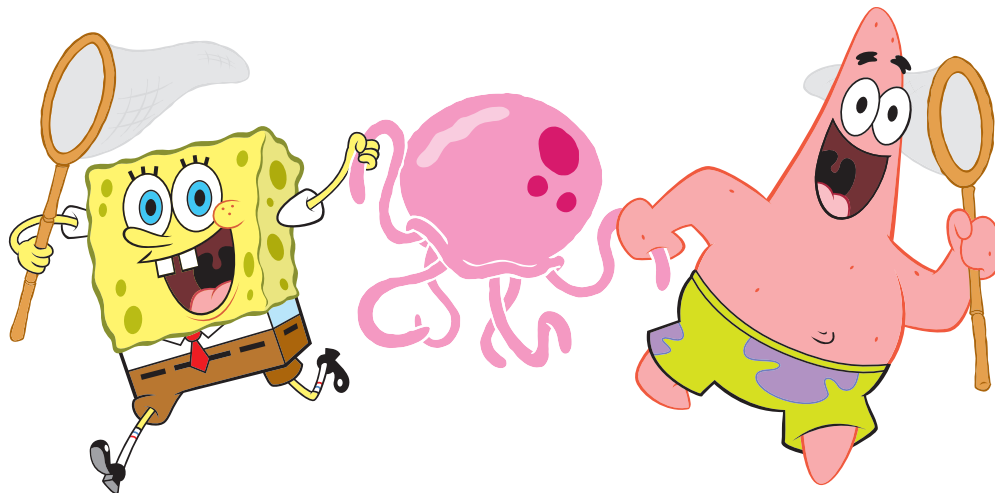


Tide Pool Exploration

SUGGESTED AGE:

Ages 7+ (with adult supervision)

Creatures that live in a tide pool habitat are adapted to survive the extreme! Special adaptations allow them to live with changes in moisture, temperature, and the constant force of waves. Learn more about some of these groups of animals below, then take your knowledge out into the field with a tide pool visit! On your next Museum visit, check out fossils from some of their ancient relatives in our newest exhibit, *L.A. Underwater*.



Echinoderms

(Includes: sea stars, brittle stars, urchins, sea cucumbers, sand dollars, and sea fans)

- Marine only!
- Spiny skin
- 5-sided radial symmetry (could be cut into 5 symmetrical parts)
- Have tube feet



Molluscs

(Includes: clams, mussels, snails, chitons, octopus, squid, limpets, and abalone)

- In marine, terrestrial, freshwater environments
- Soft-bodied, many have a shell
- Body has a head, foot, and a “visceral mass” covered by a mantle



Arthropods

(Includes: lobsters, crabs, shrimps, barnacles, sea spiders, and isopods)

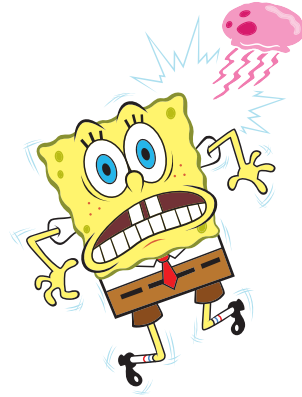
- In marine, terrestrial, freshwater environments
- Hard exoskeleton
- Segmented body and legs



Cnidarians

(Includes: corals, anemones, jellies)

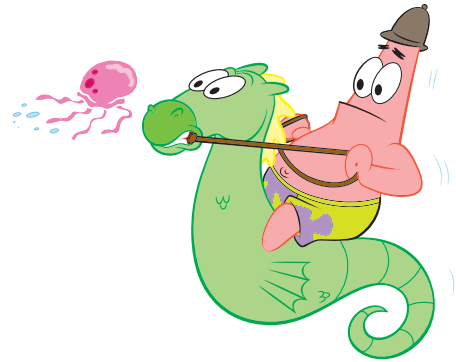
- Marine only!
- Made of a jelly-like substance
- Have stinging cells, called nematocysts
- One body opening



Annelids

(Includes: marine worms (also called polychaetes)

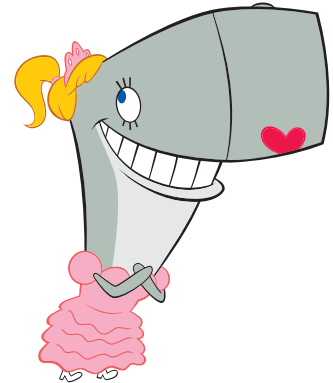
- In marine, terrestrial, freshwater environments
- Segmented bodies
- Bilateral symmetry (two symmetrical body parts), usually with an elongated body shape

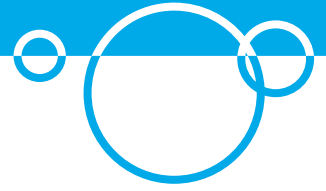
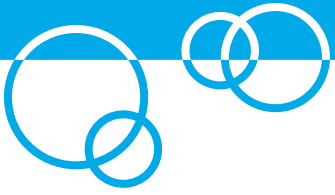


Chordates

(Includes: sharks, rays, fish, mammals, and birds)

- In marine, terrestrial, freshwater environments
- Have a vertebral column (or backbone!)





TIDE POOL ANIMAL INVESTIGATION

Look closely to find an animal in the tide pool you are observing. Sketch the animal here:

Describe what you notice about the animal's physical features, or the shape of its body.

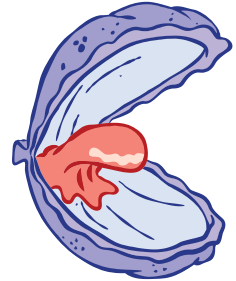
Describe any details you remember about the specific environment/ location it was found:



NHM.ORG/spongebob



Choose one physical feature (something you noticed on/about its body) and describe how it might help the animal survive in this habitat:



Which of the groups above (echinoderm, mollusc, arthropod, cnidarian, annelid, chordate) do you think it belongs to? Why?

BONUS!

Take a picture of the organism you selected. Try to get as close or zoomed in as possible while still maintaining a clear image. Later, use the [iNaturalist](#) app or website to upload your photo!



NHM.ORG/spongebob

