

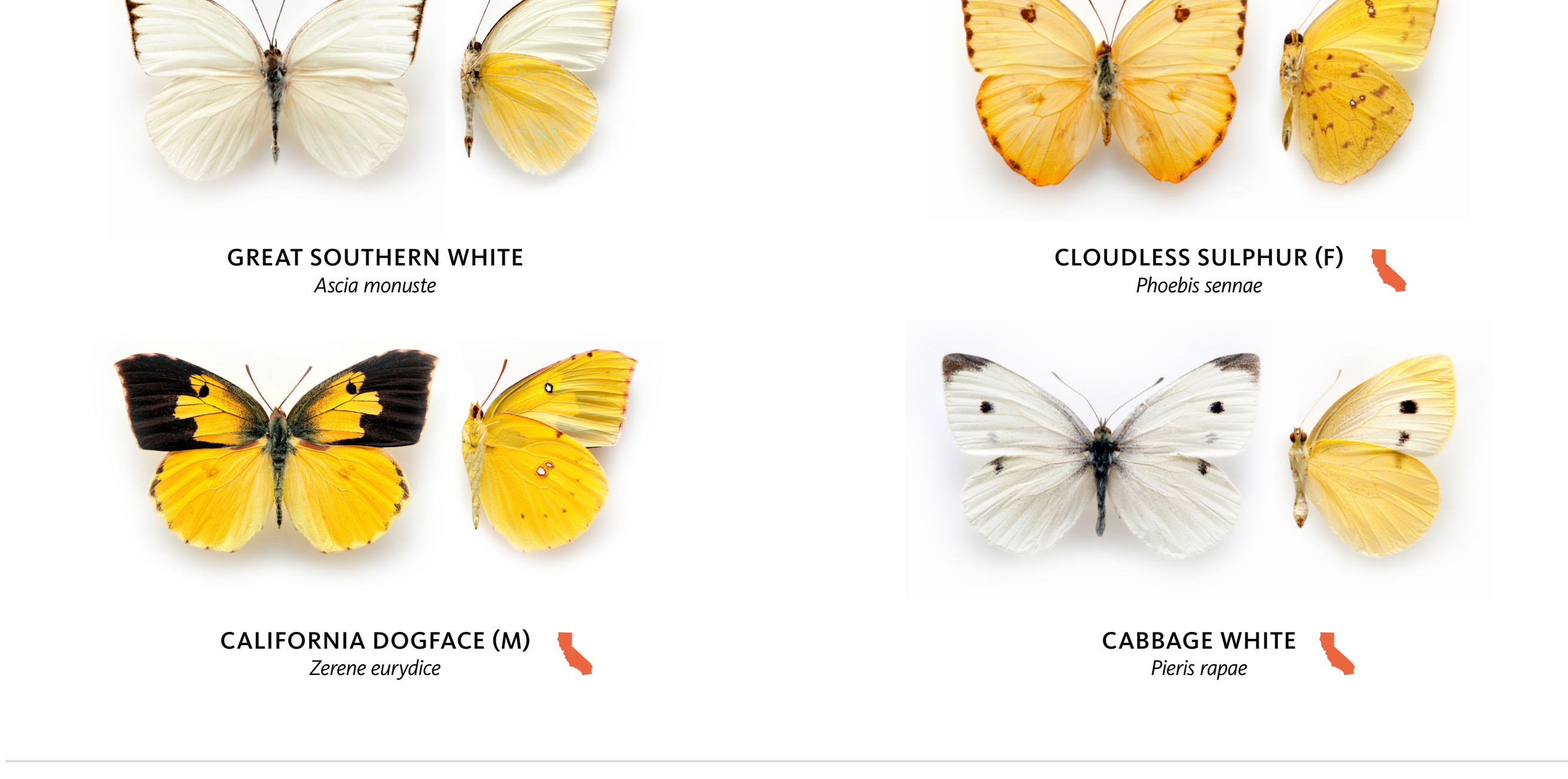
You've found a butterfly! Here's how to identify it...

**KEY:** (M) MALE (F) FEMALE  FOUND IN CALIFORNIA

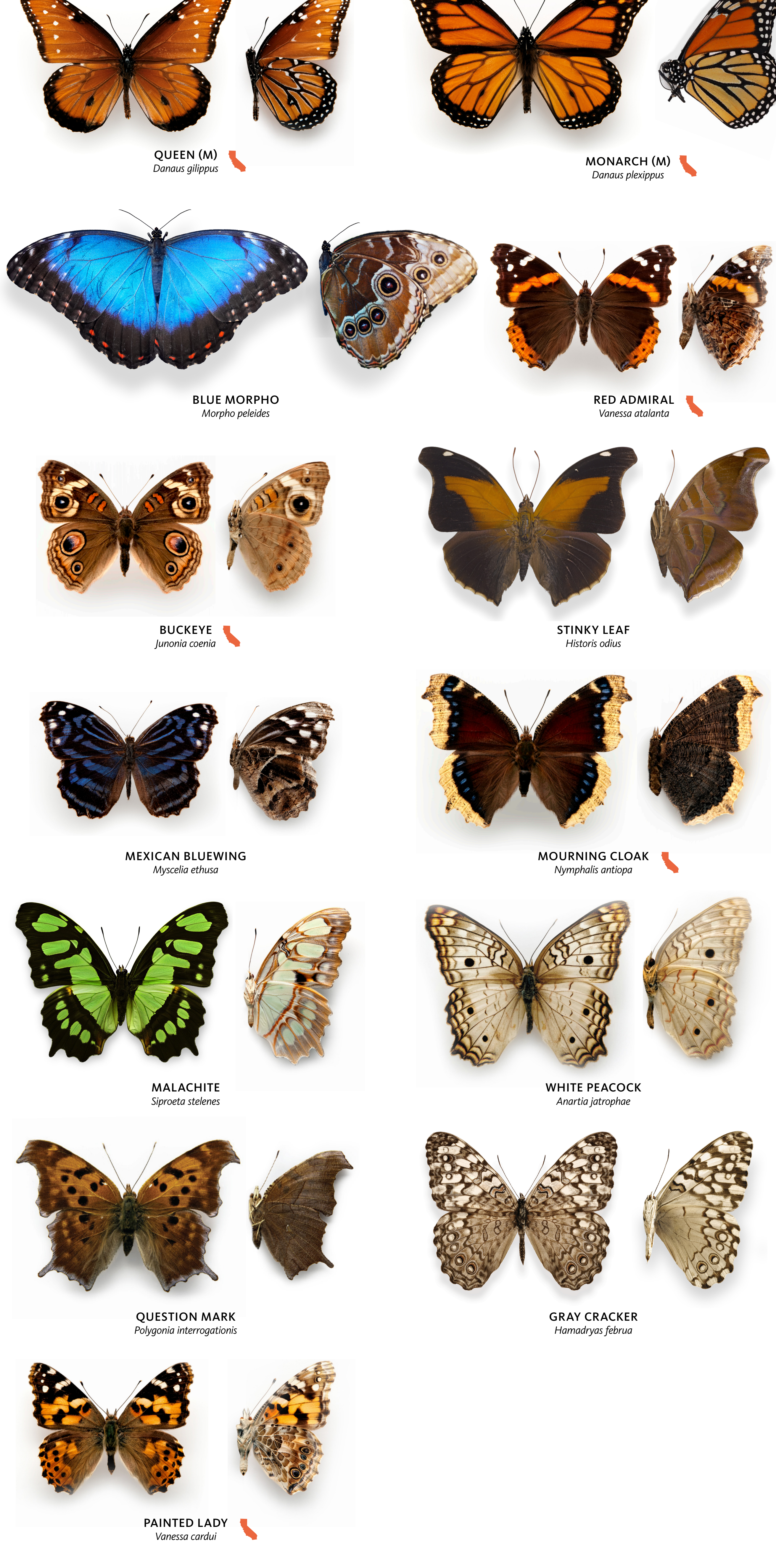
## SWALLOWTAIL



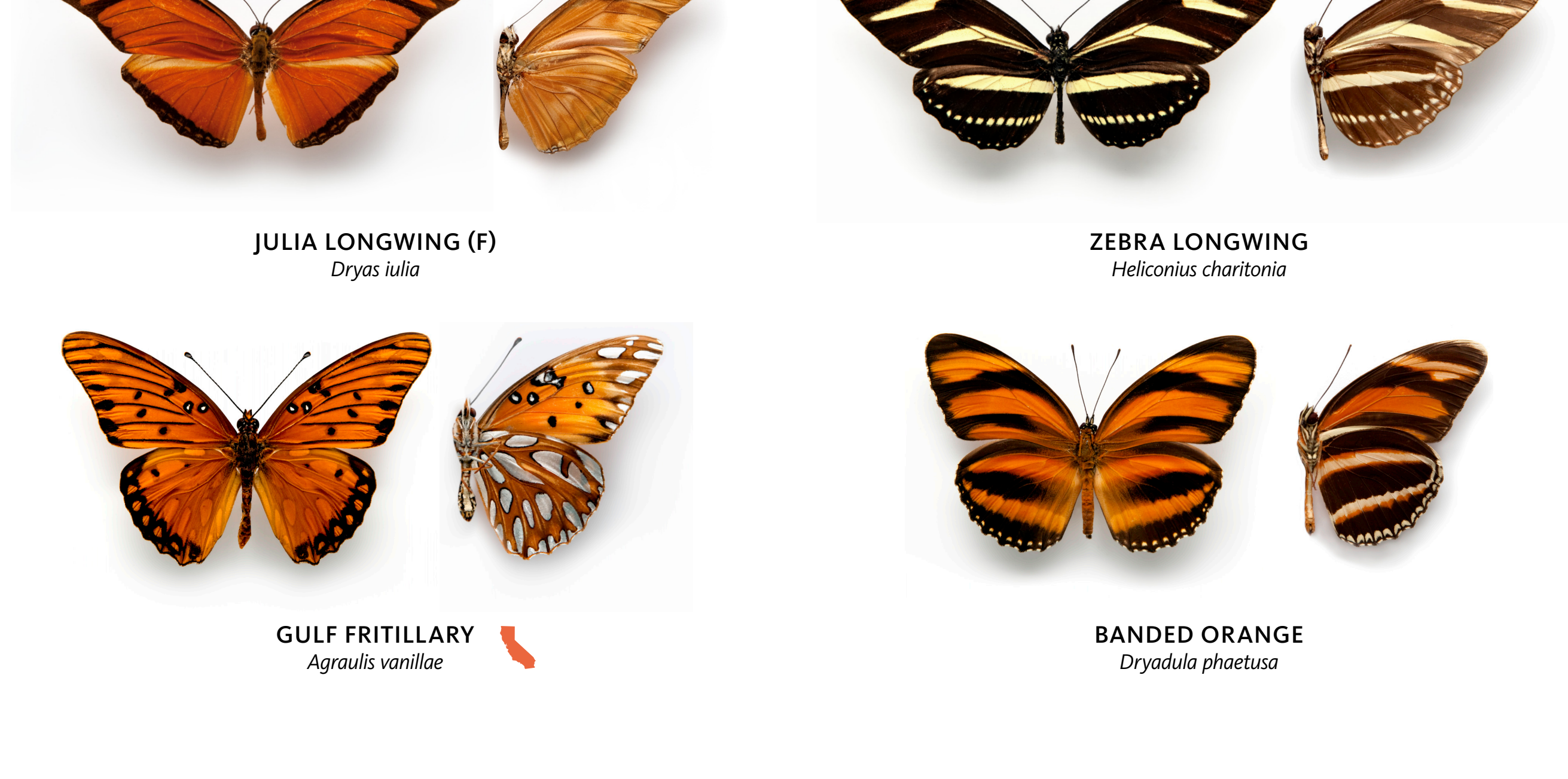
## WHITE / SULFUR



## BRUSHFOOTED



## LONGWING



**Butterflies come in a variety of shapes, sizes, colors and patterns.** These features can help camouflage (hide) butterflies from predators and also help them recognize members of their own species.

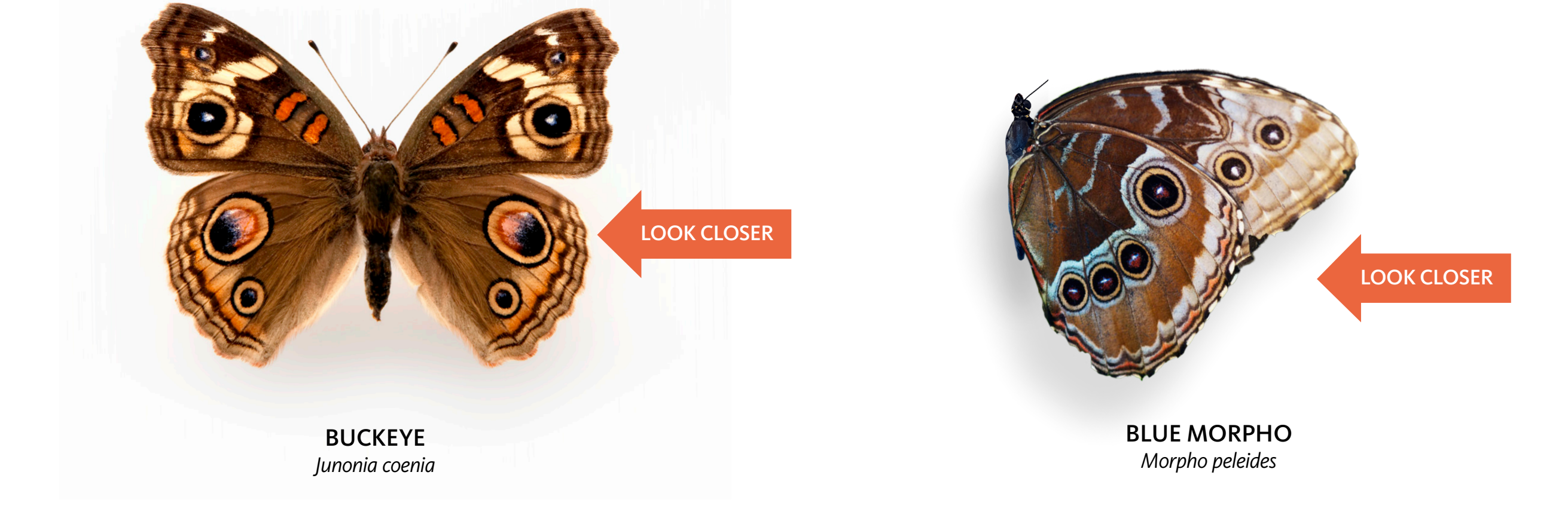
### ATTRACTION

Bright colors and patterns help males and females find each other.



### DECEPTION

Some wings mimic the shapes of large eyes. Can you find these "eyespot" on other butterflies?



### INVISIBILITY

Colors sometimes help butterflies to disappear. What environment would be best for these butterflies to live in?



### WARNING

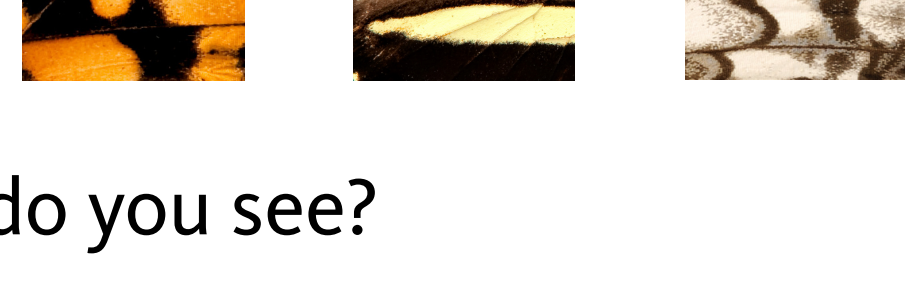
A few butterflies taste really bad. Predators remember bold colors and avoid them.



What colors do you see?



What patterns do you see?



What shapes and sizes do you see?

