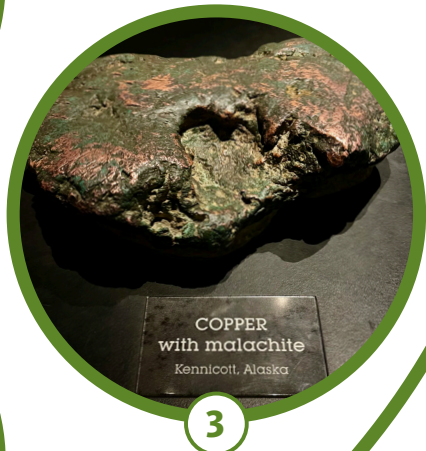


NHM Online Presents

LA ON WHEELS

From bicycles to skateboards, lowriders to Hot Wheels and everything in between, transportation in Los Angeles is an art form and a reflection of cultural identity.

Use the clues on the second page to find these *wheely* cool items around the Museum and explore how L.A. transforms movement into a celebration of nature, creativity, and community!



1 Carrasco Mural

(Judith Perlstein Welcome Center, Level 1)

As L.A. has evolved, so have modes of **transportation**. Choose your favorite example from the Barbara Carrasco mural, *L.A. History: A Mexican Perspective*, and use the touch screen to learn more about that section of the painting. See if you can answer these questions with what you learn!

- What is the name of the painting section you chose?
- What year or era does it portray?
- What mode of transportation is depicted?
- Is this mode of transportation still used today?

2 Diatoms

(L.A. Underwater, Level 1)

The history of oil in L.A. goes back over 9 million years to when we were underwater! Microscopic single-celled organisms, called *diatoms*, sank to the bottom of the ocean and turned into oil (fossil fuel). Fast-forward to the early 1900s, and L.A. started using that oil to **fuel** its booming car culture. Fossil fuels aren't the only way to get around L.A. Take some time to imagine how you would get around the city without using gasoline.

3 Copper

(Gem & Mineral Hall, Level 1)

Minerals rock, and they help us roll to other locations! Copper is used to build parts for **cars, bicycles, and batteries**. This mineral is found in multiple locations in our hall; find your favorite piece of copper – there is one you can touch near the back of the hall!

4 Ammonite

(Discovery Center, Level 2)

L.A. didn't reinvent the **wheel**, but we clearly took inspiration from the Mesozoic era. Ammonites, like this one, had a distinct round shell. Take a photo with the giant ammonite to remember your visit to the museum. Remember to tag us **@nhmla** & **#LAonWheels!**

5 The Ofrenda

(Becoming L.A., Level 1)

This *ofrenda*, or altar, connects guests to L.A. by representing the city's nature, history, and culture. Look closely! It contains at least three hidden examples of **wheels**.

- Can you find any?
- What story does it tell about L.A.?

6 Freeway Floor Projection

(The Story of P-22, Level G)

Freeways give people an easy way to cross the city, but they divide natural habitats into smaller spaces. Mountain lions and other wildlife have been spotted scurrying across the road and even using crosswalks! Try moving from one side of the highway projection to the other without touching a **vehicle**.

- On a scale of 1 (effortless) to 10 (impossible), how easy or difficult was it?
If you were an animal crossing this highway, how would you feel?
- Learn more about wildlife crossing bridges at the P-22 exhibit to find out how they benefit both animals and humans!

7 Cork Tree

(Nature Gardens)

Our gardens are peaceful areas; however, the sounds of the city still drift across the fence. Sit by the cork tree for two minutes and use a notepad or your memory to record how many types of **transportation** you notice nearby. Some examples might include cars, bicycles, motorcycles, buses, the metro rail, skateboards, wheelchairs, strollers, scooters, and more!

Congratulations on finishing the L.A. on Wheels Scavenger Hunt! We hope it was *wheely* fun! **Keep on Rollin'** by showing us your wheels at home. Take a picture of your toys, real cars, bikes, or other wheels that you see in L.A. and make sure to share with **@nhmla** & **#LAonWheels**.



Learn more about how Angelenos navigate our city in creative ways.